



F300

Smart Face Identification Terminal

Introduction

F300 is a new generation face identification terminal, with Face, RFID and PIN identification mode. With latest face algorithm Face 7.0 and large capacity ZEM810 platform, it holds 200 face templates without dividing groups, and its verification time is less than 1 second. All setting operations are easily done on 3.0 inches TFT touch screen. The elegant and small size design can fit with you slap-up office. Have face identification system, your life will become more secure and convenient

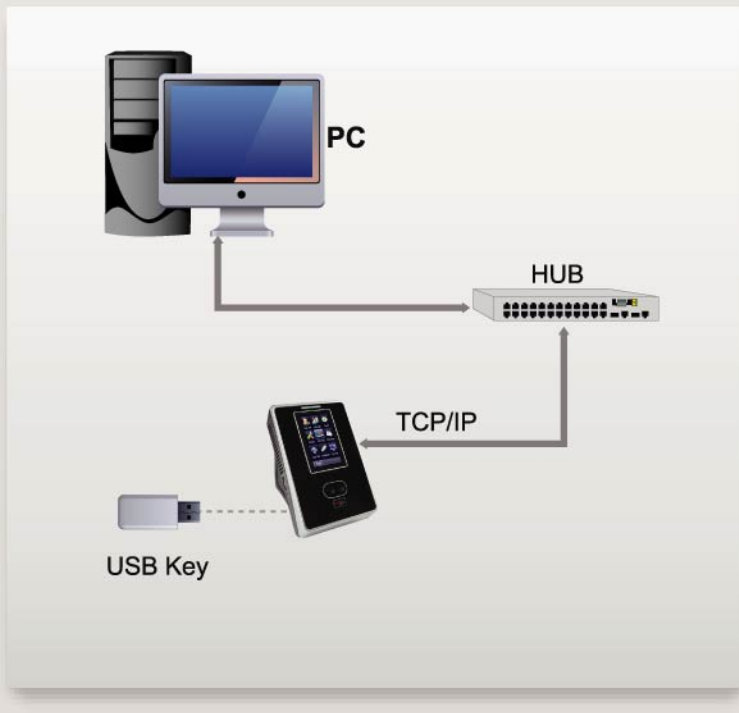




Features:

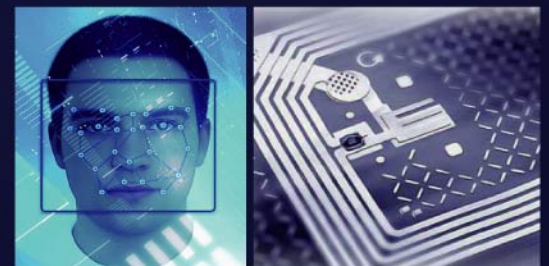
- * Elegant ergonomic design.
- * Face, RFID, PIN identification mode.
- * TCP/IP communication and USB Host.
- * 3.0 inch TFT touch screen, T9 Input, 9 Digit User ID.
- * Infra-red optical system enables user-identification in poor lit environments.
- * Optional Mifare card module.

Configuration:



Specifications:

Core Board	Platform: ZEM810
Image Sensor	Special Stereo Dual Sensor
Display	3 Inch Touch Screen
Face Capacity	200(1:N)
ID Card Capacity	10,000
Logs Capacity	100,000
Algorithm Version	Face7.0
Communication	TCP/IP, USB-Host.
Standard Functions	ID Card, Automatic Status Switch, Self-Service Query, Work Code, T9 input, 9 Digit User ID, DLST, Scheduled-bell.
Optional Functions	Mifare Card.
Power Supply	12V/1.5A.
Verification Speed	≤1S.
Operating Temperature	0°C-45°C
Operating Humidity	20%-80%
Dimensions	104.70(L)*160.00(H)*36.00(D) mm



HIT Corporation

Gandaria 8 Office Tower 7th floor, Unit IJ,
 Jl. Sultan Iskandar Muda, Kebayoran Lama, Jakarta Selatan 12240
 Indonesia

Phone: +62 21 2903 6581 ext. 306

Fax: +62 21 2903 6582

www.hitcorporation.com

